

IRISMO™ RANGE

MOTORIZATION SOLUTION
FOR CURTAINS

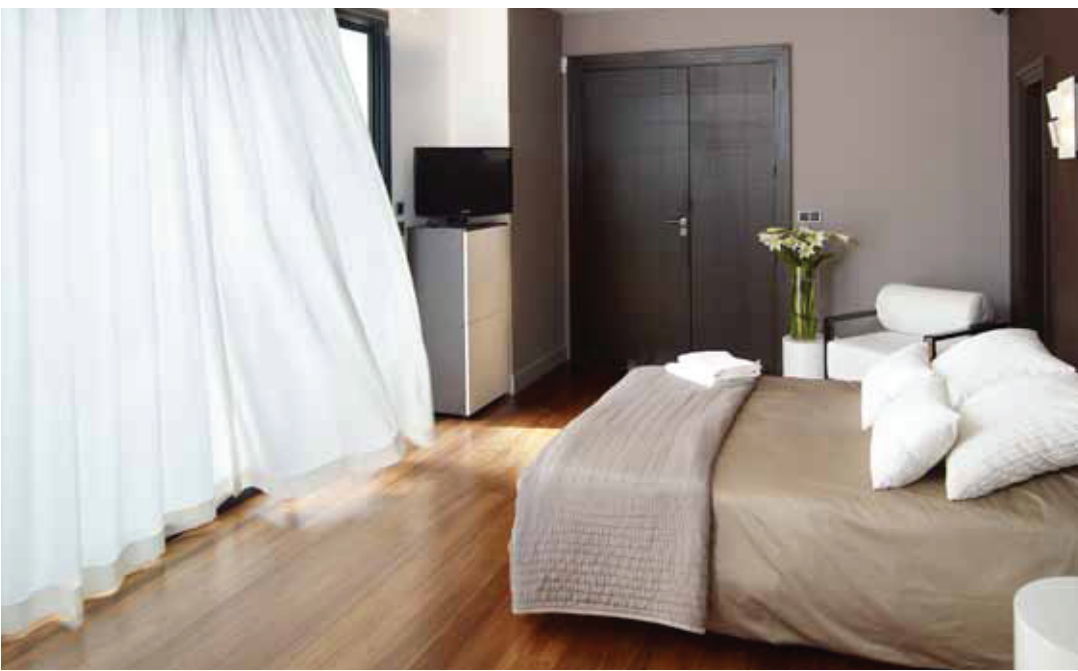


Broaden your horizon **with Somfy**

HOME MOTION by
somfy®



Irismo™,
motorizes 80%
of your curtain
applications.



Irismo™ range

the essential of somfy motorization

The Irismo™ range meets all your requirements, offering a competitive, top quality solution for curtain motorization.

You have the ideal solution, easy to access and install, to enter the home automation market.

irismo™, a package of benefits

For you

- **Simplified integration** with advanced functionalities: back release, DCT setting mode, reverse rotation.
- **For all types of curtains**, all sizes and shapes to cover 80% of curtain applications.
- **A full range of products, appropriate for all your designs**, available in all control technologies.
- **Fully compatible with the Glydea™ range**: identical settings and cabling procedures, accessories and rails catalogue, no specific training needed.

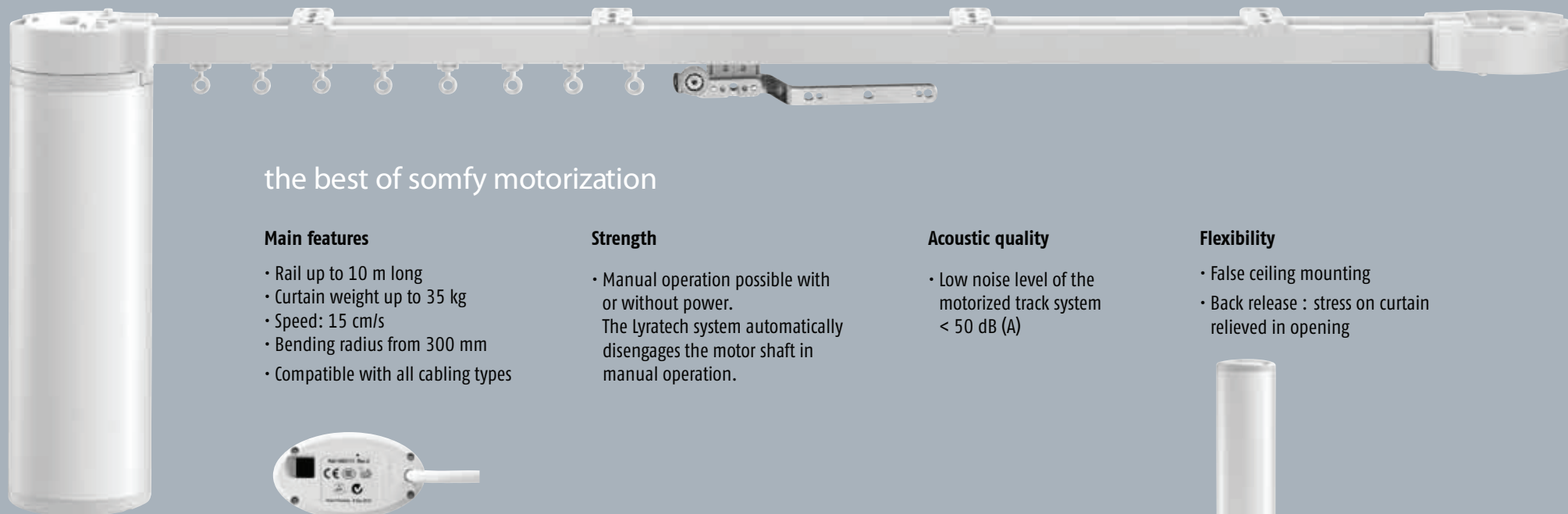
For your customers

- **Essential functionalities to motorize the curtain**: open, stop, close and manual operation.
- **Acoustic comfort** of the motorized track system.
- **Somfy reliability and quality**: tested for 15 years of operation.
- **5 years international warranty**.



International certifications





the best of somfy motorization

Main features

- Rail up to 10 m long
- Curtain weight up to 35 kg
- Speed: 15 cm/s
- Bending radius from 300 mm
- Compatible with all cabling types

Strength

- Manual operation possible with or without power. The Lyrattech system automatically disengages the motor shaft in manual operation.

Acoustic quality

- Low noise level of the motorized track system < 50 dB (A)

Flexibility

- False ceiling mounting
- Back release : stress on curtain relieved in opening



control technologies



Inis uno inteo PF



Individual control switch

- Functions: up, down, stop.



Moco 4 AC



Motor controller for animeo solutions

- Input: 1 to 4 control switches.
- Output: 1 to 4 motors.
- Programming for individual or group control.



Smoove 1 Open/Close RTS



Wall-mounted touch control

- 1 channel
- Functions: open, close, stop.
- Modular design suits all decorative styles: 2 finishes for the functional module, choice of 8 frames.



Centralis IB



Wall-mounted touch control

- Individual or group control
- Two or three-button selector control

Somfy India Pvt. Ltd.

www.somfy.co.in

NEW DELHI

CORPORATE & DELHI OFFICE

26, First Floor

Okhla Industrial Estate, Phase - III

New Delhi - 110020

Tel.: +91 11 46 111 555

Fax.: +91 11 46 111 500

Email: india@somfy.com

BANGALORE

No 318-319, 3rd Floor, B-Wing,

Mittal Towers, MG Road,

Bangalore - 560001

Tel.: +91 80 40 269 255

MUMBAI

8th Floor, 804-805,

Pranik Chambers, A Wing,

Saki Naka, Andheri (E) - 400072

Tel.: +91 22 65 563 990

LOCAL PRESENCE

AHMEDABAD

KOLKATA

CHANDIGARH

HOME MOTION by

somfy®